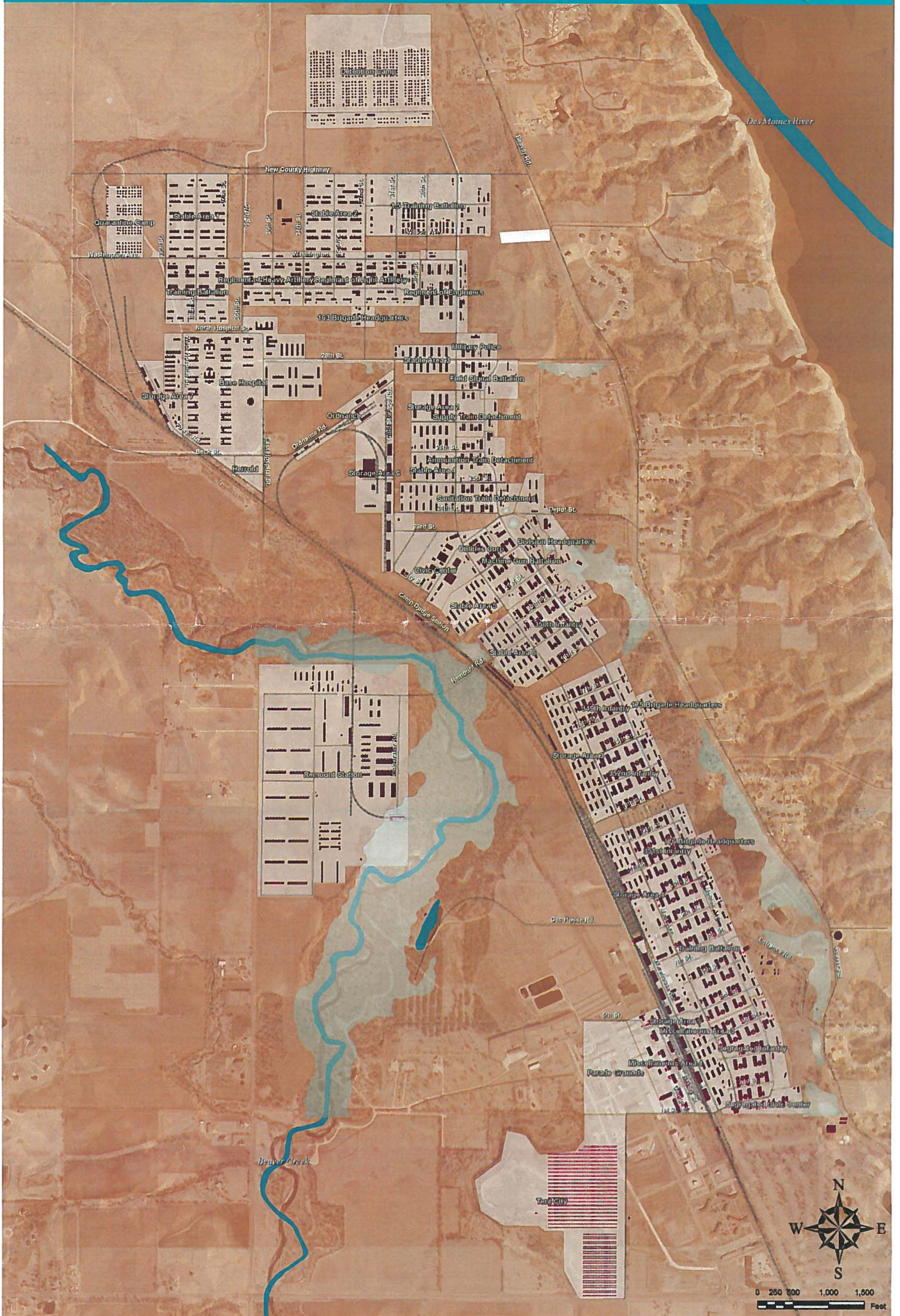


# Camp Dodge - WWI and Today



# Camp Dodge - WWI



The Base Hospital, located north of the town of Herold was also the site of baseball games.



This peaceful scene of the hospital area changed during the deadly flu epidemic of 1918—over 700 soldiers died at Camp Dodge.; over 6,000 fell ill.



World War I Ammunition Building, still in existence.



One of the Barracks located at the Remount Station located west of Beaver Creek



The Remount Station also housed the Camp's incinerator. The loading dock still exists today.



The living Statue of Liberty Photo consisting of 18,000 soldiers was most likely taken at this parade ground.



WWI Camp Dodge's Water Tower still stands, minus the peaked roof.



Camp Dodge's Tent City looking west toward Beaver Creek.

During World War I, Camp Dodge was selected as the 13th Cantonment. Up to 3,000 buildings were constructed in a few short months, with most dismantled in the 1920s.

Camp Dodge was selected as a training site because of its "wholesome atmosphere" and the similarity of the Iowa terrain and climate to the battlefields of Belgium and France.

WWI Camp Dodge had access to the building materials needed for quick development. There was coal to the north and west; Portland cement and limestone to the south, as well as shales for brick, drain tile, and sewer pipe. Transportation was provided by the InterUrban Railroad.

Over 125,000 soldiers trained at Camp Dodge, arriving from more than 12 states.



Aerial Photo of the Camp Dodge Station area looking south—1919

