

THE JOHNSTON HISTORICAL BARN/FARMHOUSE
A PROJECT OF THE JOHNSTON (STATION) HISTORICAL SOCIETY

PREFACE

Johnston has a strong agricultural background, and even today it is the worldwide headquarters for Pioneer Hi-Bred International and for John Deere Credit. Hundreds of national and international visitors come to Johnston, just to visit these firms. The city is also the home of Iowa Public Television as well as of Camp Dodge, headquarters of the Iowa National Guard. These assets draw hundreds a national visitors to the community. With the population of Johnston of over 8,000 people and the metro area of nearly a half million people, there will be many opportunities to rent a facility such as our barn/farmhouse to people who want to experience a truly unique atmosphere for business meetings or other gatherings.

PROJECT IMPACT

Barn

The present size and location of the barn will lend itself to use for community dances, concerts, and other events. At its original location, the barn was a working barn and housed cattle and horses on the ground floor, fed on hay from the hayloft on the second floor. But the hayloft also was used for barn dances, as our older Johnston residents can testify, when it was temporarily empty. The hayloft is now permanently empty of hay and will serve very well for barn dances or other events.

We intend to preserve the rustic atmosphere of the barn but also make it fully functional for parties and community gatherings. It will have a 950 square foot meeting room on ground level with a 1900 square foot loft that can be used for many community purposes. The lower level will be available to rent all year long with heating and air conditioning. The loft will be available according to the season. The loft of the barn will be accessible at ground level by way of a path that gently rises up to the bermed entrance. This will allow old and young, disabled and enabled, to enjoy a unique experience of being in the loft of a true barn.

With the rapid growth of Johnston, (4702 population in 1990, 8131 in 2000 census) open spaces to be used for community events have been developed, including the new park near the north end of Merle Hay Road, the site of our

historical barn/farmhouse project. The new park will serve as a gathering place for many groups, with the barn and its ambience as a main feature. The City will use the barn for its Green Days celebration in June. An agreement, drawn up between the Historical Society and the City, will assign the maintenance and operation of the barn to the city. Insurance, utilities and staffing would be provided by the City. Rental of the facility will generate business opportunities for local food providers and entertainers. Friends and families traveling into the area to have family reunions, weddings, graduations and anniversaries will spend money at the local motels and restaurants as well as other businesses.

A similar but larger barn was moved to an orchard in Cumming and is called the "celebration barn". This facility is booked for every weekend throughout the year. The rent varies from \$500 to \$1000 depending on time and area booked. The lower level was finished and does not resemble a barn.

House/museum

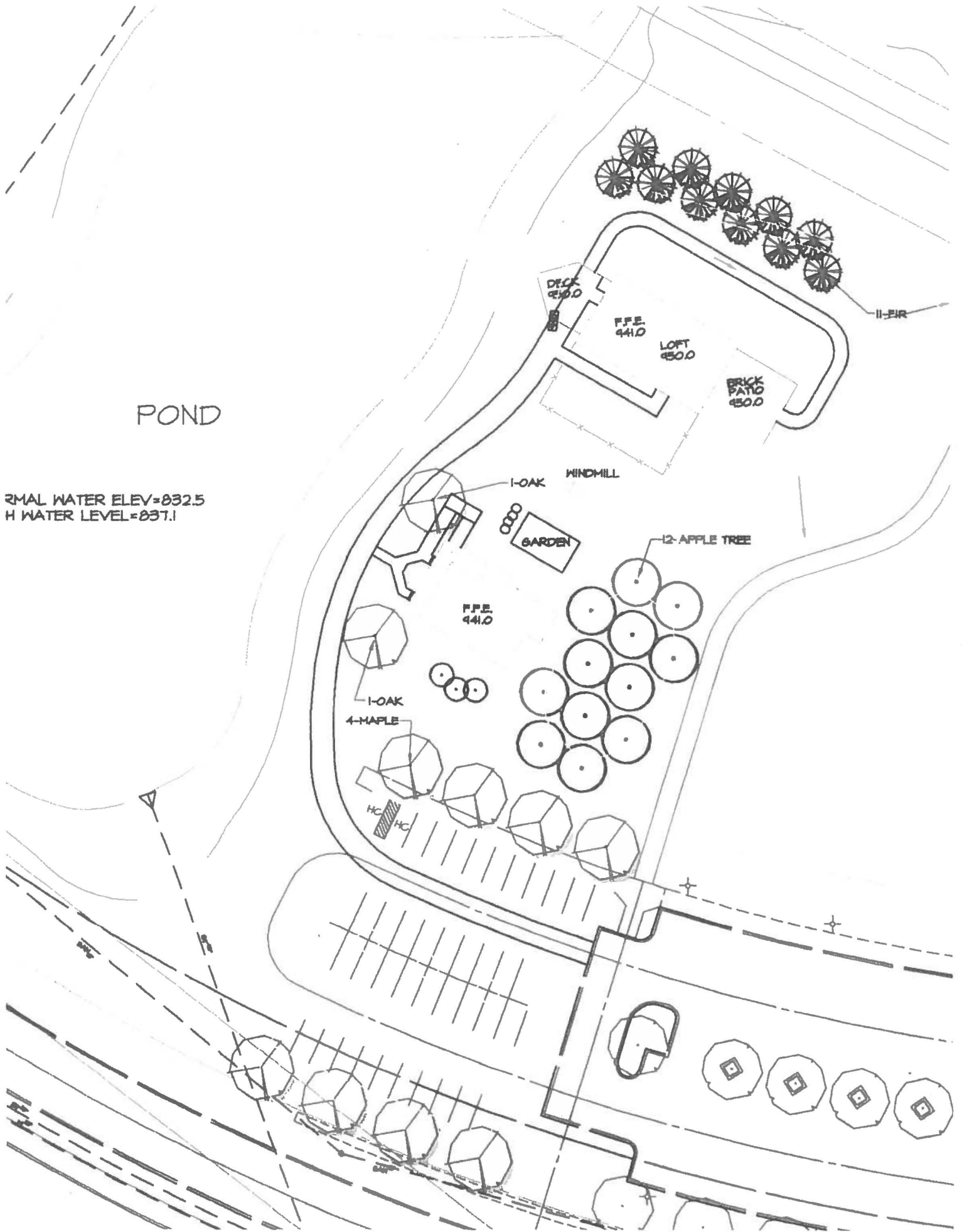
This century-old six-bedroom farmhouse will be used as a showcase to exhibit Johnston history. There is room for office space as well as meeting areas. Exhibits will show the history of the area, including the Native American history as well as that of early pioneer families. We also hope to have permanent exhibits depicting the hybrid corn revolution that started right here in Johnston in the nearby Pioneer Hi-Bred research fields. Tourists have come to Johnston with inquiries about the history of the area; and the farmhouse and its museum will be a showcase of our history, with opportunities to make further research into the past.

IN CONCLUSION

The house and barn, when completed, can be a lynchpin to tie our community together. The location of the project, adjacent to the Johnston Library and within a 19-acre park, will make the area truly a natural gathering place. School children could learn everything from stories about the hardships that pioneer families endured in the past to the unlimited possibilities of biogenetics for the future. Community events - such as ice cream socials or potluck picnics - would be a natural here, and would draw people together. As was pointed out before, the city has grown so rapidly, that a project such as this is needed as a focal point for the community. We are pleased to be able to bring it to Johnston in such timely fashion.

POND

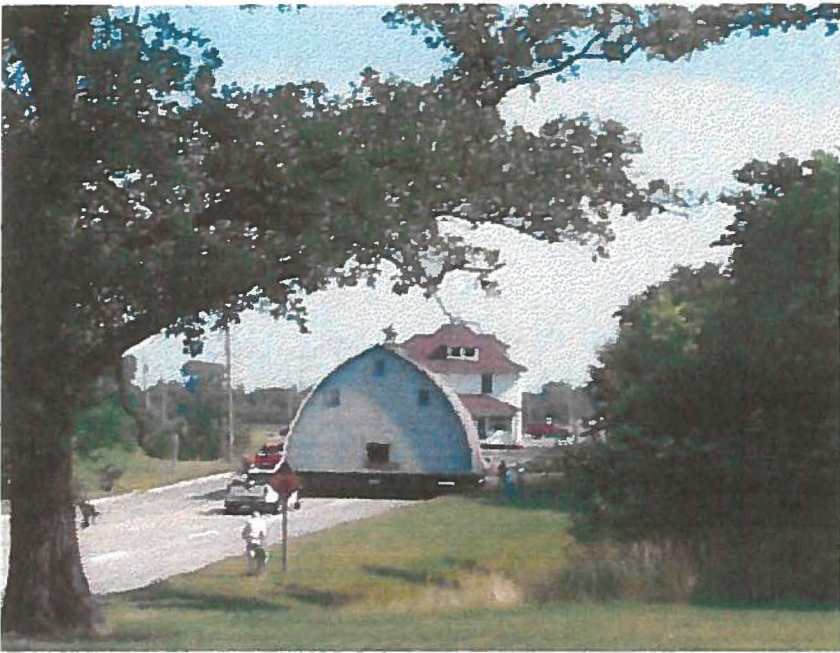
2MAL WATER ELEV=832.5
H WATER LEVEL=837.1



THE JOHNSTON HISTORICAL BARN/FARMHOUSE PROJECT
A PROJECT OF THE JOHNSTON (STATION) HISTORICAL SOCIETY

	Phase I	Phase II	Phase III
Move structures	48,887.00		
Concrete walls, footings, waterproofing	49,394.00		
Concrete floors and stairs	9,865.00		
Steel beams & posts	5,856.00		
Excavation & berming	10,395.00		
Heating & AC			24,688.00
Electrical			25,200.00
Plumbing		14,400.00	1,500.00
Barn Façade		4,092.00	
Deck materials		3,300.00	
Insulation		1,051.00	
Carpentry		5,000.00	
Doors		1,190.00	
Siding			?
Roofing			?
Windows		150.00	
Gravel lane		590.00	
Concrete walks		1,500.00	
Insurance	279.00		
Cleanup		2,500.00	
Landscaping		5,000.00	
Windmill move and placement	0.00		
Engineering & architectural	11,732.00		
Administration	2,700.00		
Contingencies			5,000
	139,108.00	38,773.00	56,388.00
TOTAL	234,269.00		

The Johnston (Station) Historical Society has sufficient funds to complete Phase I
 Phases II and III will require financial support of approximately \$95,000
 Numerous "in-kind" donations have made this project possible

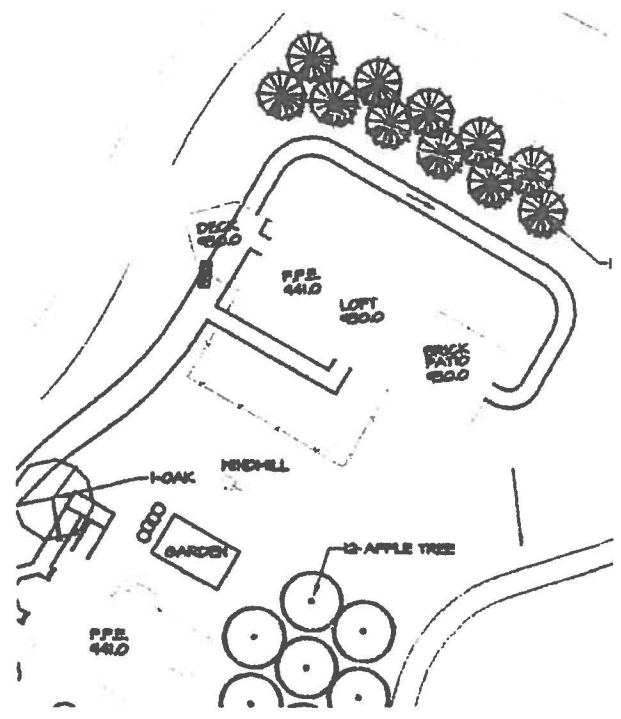


**Johnston (Station) Historical Society
Simpson House and Barn Project**

The house will become the historical society's headquarters and museum. The barn will become a community events center for the whole community to enjoy.

At the east end of the barn, a brick patio area will be created to accommodate a ground level entrance to the loft. This century old brick has been salvaged from the cellar of the old farmhouse.

Everyone who lives, learns or labors in Johnston is a part of Johnston's history. Commemorate people or events for the future generations, by ordering an inscribed brick for the patio.



Commemorative Brick Order Form:

Engraved Brick (s) (\$85.00)

Please fill in the name(s) to be engraved (a maximum of 14 characters per line for two lines). Make a copy of this form if you are ordering more than one brick.

Make checks payable to the Johnston (Station) Historical Society

Mail to the Johnston (Station) Historical Society
P. O. Box 109
Johnston, Iowa 50131

Any questions?
Phone: Mary Jane Paez, 278 1170
Bob Thomas, 277 3882