

WELCOME

Spend A Little



ARCHIVES
977.
758
CHA
1995

While In *Johnston*

Lake Country



Whether you're spending a day, a week or the rest of your life in Johnston, this is a practical resource guide and holds a wealth of information to make your stay in Johnston's Lake Country more enjoyable. But it's also an invaluable directory for everyone calling Johnston, Iowa their home.

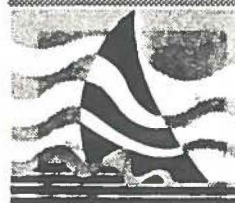
Vacationers and residents interested in history, wildlife, walking and the great outdoors, will find this guide a pleasant companion as you set out on new journeys, or revisit one of nature's old friends.

Johnston hosts a population of more than 5,500 residents as the northern-most suburb of the Greater Des Moines community. Our residents enjoy the luxuries of public tennis courts, a private country club, and several private and public swimming pools. But Johnston is much, much more. There's fishing, boating, bike paths, camping and the 5,400-acre Saylorville Lake. At not quite one acre of lake for each resident, we have plenty of room to share with you.

So if the life you're trying to escape from is fast-paced or pressure-filled, we're glad you've chosen the peaceful surroundings of Johnston.

John VerHoef

The Honorable Mayor of Johnston, Iowa



Johnston

Welcome to Lake Country: Johnston, Iowa. We're pleased you'll be spending a little while with us!

This is a wonderful city to call home. We believe it's one of America's best places to live and work! Even if your stay is abbreviated, we are still glad you've taken the time to become part of the history of one of the best kept secrets in the Midwest — Johnston, Iowa.

Take a moment to look through our new vacation guide and tourist brochure. It's filled with lake events, entertainment and shopping information, formal and casual dining information, and in-depth information on the Saylorville Lake area. With more than 20 restaurants, 447 hotel rooms and 40 retail shops and stores, Johnston, Iowa, has something for the entire family.

From its wide selection of restaurants and hotels, to the peaceful, tranquil aura of Saylorville Lake, Johnston is the kind of city you'll want to return to year after year.

So relax. Prepare yourself for one of life's really beautiful cities — Johnston, Iowa. Yes, you'll be thrilled. The more time you spend in Johnston, the greater the fun. Sit back, kick back, and enjoy our Lake Country.

Del Brandt

President, Johnston Chamber of Commerce

Johnston, Iowa... Gateway To Lake Country

Johnston serves as the gateway city to Iowa's largest man-made lake - Saylorville Lake. Designed to guarantee flood control for Central Iowa, the 26,000-acre lake project is a breathtaking display of natural beauty and elegance.

The resort area is made up of the larger Saylorville Lake area, and the well-maintained Big Creek State Park. This popular vacation spot includes public recreation areas, sport and leisure fishing, wildlife and nature trails, and woodlands and wetland areas.

With more than one dozen public boat launching ramps, three public beach swimming areas, ten public picnic areas, two bike trails, horseback riding stable, marinas, and five campgrounds, the Saylorville Lake/Big Creek Recreation Area has something for every family. And all of this is only minutes away from Johnston, Iowa, "Central Iowa's Gateway To The Lakes."

For more information, please phone 515-278-4656 or stop by the Administration Office, located on the west end of Saylorville Dam.

Lake	Saylorville Lake Facts	
Length In Miles	<u>Normal Level</u>	<u>Maximum Flood</u>
Water Elevation (Feet Above Sea Level)	24	54
Surface Area (Acres)	836	890
Storage Volume Acre-Feet	5,950	16,700
(An Acre-Feet Is One Acre Of Water One Foot Deep)	90,000	586,000
Dam Height	105 Feet High	
Dam Length	6,750 Feet Long	
Type of Dam	Rolled Earth Fill	
Dam Volume	7,600,000 Cubic Yards	
Dam Elevation	915 Feet Above Sea Level	
Spillway Location	West End Of The Earth Dam	
Spillway Length	430 Feet	
Spillway Elevation	884 Feet Above Sea Level	



Big Creek State Park



Just north of Johnston, Iowa and the Saylorville Lake, is the second of the Johnston, Iowa natural treasures, Big Creek State Park. This family orientated vacation spot provides recreation for visitors of all ages and outdoor interests.

The focal point of the 3,550-acre complex is

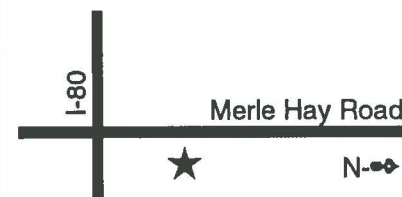
the 866-acre lake. Shelters and picnic areas, a beach, two playgrounds, a multi-purpose sports field and seven public boat ramps provide a variety of outdoor recreation opportunities.

Big Creek State Park is fun for the whole family, from its clear water beaches to its outstanding year-round fishing stocked with crappie, bluegill, largemouth bass, walleye, channel catfish and tiger muskie. Big Creek truly has something for everyone.

For more information on current events at Big Creek State Park, please contact the Park Headquarters at 515-984-6473



The Parent's Partner®
Preschool & Child Care



(515) 254-0014
5305 Merle Hay Road
Johnston, Iowa 50131
Infant/toddler care, pre-school education, and before and after school care with transportation.



Look to Sun for Value

- Authorized Pharmacy for:
- Medimet • IPSC-PSC-PAID PLAN and
- John Deere

Locally Owned and Operated

Monday thru Friday 8:30 a.m. - 9 p.m.
Sat. 8:30 a.m. - 5 p.m. • Sun. Noon - 5 p.m.

SARAH's

SHOP



278-5503
Village Square
Mall
5800 Merle Hay Road

THE BOAT HOUSE

253-9404

Looking for a place
to unwind....

- Pool Table
- Darts
- Pinball
- Full Service Kitchen

Pull up to our dock

7695 N.W. Beaver Drive

ACROSS FROM CAMP DODGE

Simply The Best

- PRIME RIB
- AGED STEAKS
- PASTA
- FRESH SEAFOOD
- TWILIGHT DINING
- PRIVATE PARTIES
- LUNCH • DINNER
- COCKTAILS



5810 MERLE HAY ROAD

*Johnston, Iowa...
Discover Its Beauty*

The City of Johnston takes great pleasure in inviting you to discover one of the most progressive and fastest growing communities in Iowa. Located only 15 minutes from downtown Des Moines and immediately adjacent to I-35/80, Johnston is truly "The Gateway To Lake Country."

Johnston's charm and attractiveness to developers, residents and businesses seeking locations, results from the healthy balance between a rural and metropolitan environment.

Education is also a top priority in Johnston. The schools are highly rated for a number of reasons...excellent faculty, low pupil-to-teacher ratio and a strong belief in the basics of education.

And playing is fun in Johnston, too.



Saylorville Lake consists of 5,400 acres of sparkling blue water set in a scenic valley of gently rolling hills, offering opportunities for swimming, boating, fishing, water-skiing and sailing. The Lake's Annual Regattas brings visitors and participants from all across the Midwest.

Camp Dodge, home of the Iowa National Guard, boasts a 45,000 square-foot public swimming pool and military museum. One private golf and country club and one private sports and recreation facility can be found in Johnston. A shopping mall complex is located in Johnston, offering retail shops, restaurants and lounges within the mall and surrounding area.

Take advantage of the many amenities Johnston has to offer.

Johnston has something for everyone!

For more information on Johnston, Iowa, or for information on current events going on in and around Johnston, call 515-278-2344.

**For
Business
or Pleasure**

- Corporate Rates
- Weekend Fun Packages
- Conference space for 10-250
- Indoor Pool & Spa
- North End Diner for breakfast, lunch & dinner
- Free HBO

 **The Inn at Merle Hay**
276-5411
5055 Merle Hay Road
Johnston



Performance. Protection. Quality™

10 Minute SERVICE

No Appointment Necessary

- All fluid levels checked
- Oil Change, Oil Filter
- Complete Lubrication
- Minor Repair

**PROUDLY SERVING
JOHNSTON FOR 16
FOR 16 YEARS.
STOP BY FOR FAST,
FRIENDLY SERVICE**

SUPER SERVICE CENTER LUBE

Mon. - Fri. 8-5
Sat. 8-2 • Closed Sunday

5358 Merle Hay Road
276-8011

(1/4 Mile North of I-80 Behind Car Wash)



**I MOVE FAST...
SO YOU CAN TOO !**

**CALL
DeAnn Lee**

\$1,000,000 Club Member
"Where Service and Hard
Work are a Reality !"



Bus. 226-1896
Res. 276-3189

IOWA REALTY



**25 Years
and Still Growing**



**We "Care" for the
future of Johnston**

Village Square Day Care Ltd.
6609 Greendale Road
Johnston, Iowa

276-2499



Green Meadows Johnston's Emerald City

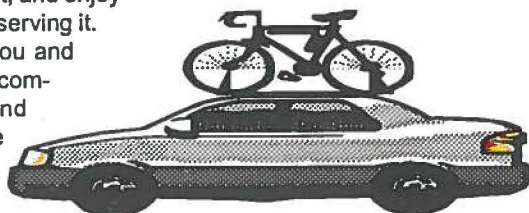
Green Meadows planned community is an innovative community development in Johnston, Iowa and one of Iowa's most dynamic communities. Developers of the 400-home site is Green Meadows Ltd., a wholly-owned subsidiary of Pioneer Hi-Bred International, Inc., one of the country's leading agricultural companies.

The original Green Meadows planned community, platted in 1978, introduced a modeling of planned living and corporate developments to natural surroundings. The subsidiary's latest development is Green Meadows West which strives to offer planned living, work, shopping and community activities while living in harmony with nature.

The two developments are connected by a 400-acre portion of the Beaver Creek river valley. The view is reminiscent of a stroll through one of Iowa's century-old county seat towns with its green belt areas, trees and wildflower architecture.

The vision of both Green Meadows and Green Meadows West planned communities is really quite simple: Establish a quality community close to an urban center, where people can view, walk through, learn about, and enjoy nature, while at the same time preserving it.

For more information on how you and your family can enjoy the planned communities of Green Meadows and Green Meadows West, contact the Green Meadows development association at 270-3500.



Serving Your Community

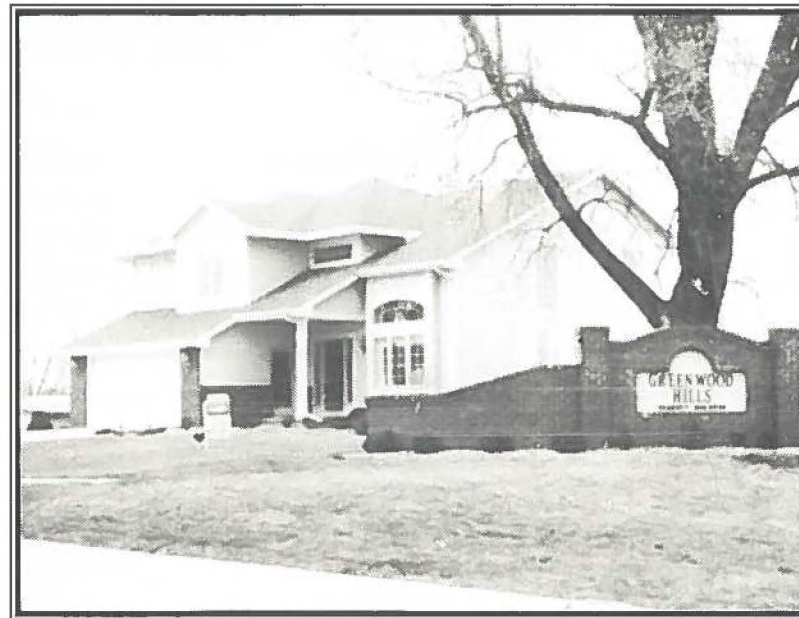
5880 Merle Hay Road
237-5388



BRENTON Bank

Member FDIC

GREENWOOD HILLS IN JOHNSTON



APPEALING *and* AFFORDABLE.

Value looks better than ever at Greenwood Hills.

We are delighted to present the newest in home designs, value, and location, all in one exciting area. Conveniently located off 86th Street in Johnston, Greenwood Hills can be called "the perfect place" for your new home. Regency Builders is proud to be the exclusive builder of these wonderful homes, each having a unique look, yet blending together into a fantastic neighborhood. Please join us for a private showing of this wonderful neighborhood, a place your family will love for many years to come.



COLDWELL BANKER

MID-AMERICA GROUP,
REALTORS®

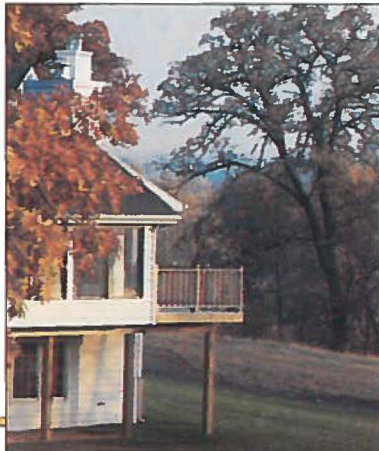
For a private showing or more information contact

Randy Clarkson 224-8845

©1995 Coldwell Banker Mid-America Group, Realtors®. An Equal Opportunity Company. Equal Housing Opportunity. Independently Owned and Operated.

Thinking about a change of scenery?

Picture yourself looking out into your backyard just in time to see a deer standing amidst a greenbelt dotted with wildflowers. In Green Meadows and Green Meadows West, such sightings are common. These extraordinary business and residential developments offer the best of both worlds, an escape from city congestion, yet convenient access to a metropolis.



The developer of these innovative sites is Green Meadows Ltd., a wholly-owned subsidiary of Pioneer Hi-Bred International, Inc., one of the country's leading agricultural companies. The influence of Pioneer, a company known for its long-term approach to business and its commitment to agriculture and nature is apparent.

The neighborhoods are all pedestrian and bicycle-friendly, and range from beautifully manicured boulevards with enchanting fountains to expansive greenbelts

which encourage wild-life to flourish, as described above. This makes it a safe, enjoyable place in which to work, live and play.

If manicured boulevards and dancing fountains are the style you're looking for, Green Meadows is the option for you. Green Meadows, first planned in the early 1980's, is a part of a community scheduled for a balanced development of residential, commercial and open green spaces. The Green Meadows Corporate Campus was designed to blend into the residential atmosphere naturally while offering an escape from congestion, parking problems and other downtown hassles. Wouldn't it be a refreshing change of scenery to have your home, work, schools, shopping, plus fishing and boating opportunities only minutes away?



Located in Johnston, Iowa, two premier developments offer many options for relocating your home or business. The developments are included within the boundaries of the Johnston School District--regarded as one of Iowa's best. Johnston is a quiet, yet dynamic community, a north western suburb of Des Moines.



And easy access to highways allow residents and business people the convenience of being just minutes from downtown Des Moines. Both communities were designed with your desire for high quality, convenience and security in mind.

Thinking about a change in scenery for your home or business? We invite you to take a closer look at the benefits of choosing Green Meadows planned communities.



GREEN MEADOWS, LTD.
5608 Merle Hay Road
P.O. Box 183
Johnston, Iowa 50131-0183
(515) 270-3500

Johnston, Iowa Frequently Call Telephone Numbers

Mayor John VerHoef 278-9676
5947 South Winwood
Johnston, Iowa 50131-1648

Johnston City Hall 278-2344
6221 Merle Hay Road
Johnston, Iowa 50131-0410

Johnston Public Works 278-8626
6400 NW Beaver Drive
Johnston, Iowa 50131-0410

Polk County Fire District Number One 278-2344 or 911
6015 NW 62nd Avenue
Johnston, Iowa 50131-0162

Johnston Police Department 278-2345 or 911
6221 Merle Hay Road
Johnston, Iowa 50131-0410

Johnston Public Library 278-5233
6221 Merle Hay Road
Johnston, Iowa 50131-0327

Johnston City Administrator 278-2344
6221 Merle Hay Road
Johnston, Iowa 50131

Gardener's of America 278-0295
5560 Merle Hay Road
Johnston, Iowa 50131-0241

**Johnston Evangelical
Free Church** 276-0177
6270 Merle Hay Road
Johnston, Iowa 50131-0007

St. James Lutheran Church 276-0134
5665 Merle Hay Road
Johnston, Iowa 50131-0062

**St. Paul
Presbyterian Church** 276-2818
6426 Merle Hay Road
Johnston, Iowa 50131-0158

Convalescent Home for Children, Inc.SM

*A network of residential and community
services for Iowans with disabilities*

Johnston Programs: *Children's
Habilitation Center,
Johnston House,
Assistive SolutionsSM*

Des Moines Programs: *Des Moines
Hearing & Speech Center,
Beaverdale House,
Windsor Heights House*

Ankeny Programs: *Ankeny House*

5900 Pioneer Pkwy., P.O. Box 707
Johnston, IA 50131

Phone: (515) 270-2205
FAX: 276-0140



LIBERTY
SAVINGS BANK

JOHNSTON'S HOMETOWN FULL SERVICE BANK

EXTENDED HOURS TO SERVE YOU BETTER

7:00am to 6:00pm

DRIVE UP ATM AVAILABLE FOR YOUR CONVENIENCE



5721 Merle Hay Rd.

270-2001

FDIC

INSURED

**Longview
Golf**

*Driving Range &
Pro Shop*
NOW OPEN

- *Open 7 Days A Week*
- *Practice Green*
- *Sand Bunker*
- *Lights For Night Practice*
- *Golf Classes & Equipment*

LORI GAFFNEY
LPGA CLASS A PROFESSIONAL
8611 N.W. 54TH AVE

254-0442

Together
Everybody
Accomplishes
More

Proudly a part of the
Johnston team

**Johnston Community
School District**

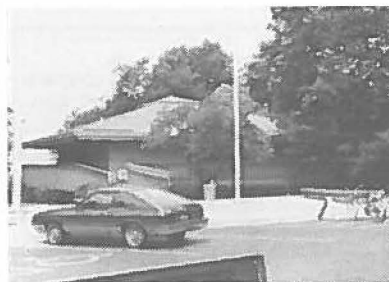
Welcome To The Dragoon Trail

Although you only have to travel about ten miles to the east of Johnston, Iowa, to take advantage of Adventureland's Amusement Theme Park Dragoon Rides, the Dragoon Trail runs directly through the heart of Johnston and serves as a tourist's constant reminder of how difficult travel once was through the prairies of an untamed Iowa.

Dragoons, lightly armed Cavalry soldiers who rode swift horses and scouted the land for potential enemies, originated in England. They were first used in America during the Revolutionary War. These men were sent through the area now known as Johnston, Iowa to scout the area, locate and record the number of American Indians, and keep settlers out of the region acquired in the Black Hawk Purchase. They were known as the "Watchmen of the Borders."

When the Dragoons first traversed Iowa, there were no settlements or established roadways. Lieutenant Albert Lea, the Dragoon chronicler and topographer, had only rivers to use as guides. His "Iowa District" report was the first use of the phrase, "Iowa, the beautiful land."

Retrace the portion of the path of the Dragoon from Saylorville Lake through the Downstream Corridor which includes a recreational 19-mile-long path from the Saylorville Dam to the middle of Des Moines.



Saylorville Lake Beaches & Parks



**SIX LOCATIONS TO SERVE YOU
PLUS A FULL SERVICE MACHINE SHOP**

6523 Merle Hay Road
Johnston, IA 50131
Ph. 276-5485

2800 E. University
Des Moines, IA 50317
Ph. 265-8191

3104 S.W. 9th
Des Moines, IA 50315
Ph. 283-1579

202 S. Duff
Ames, IA
Ph. 233-1551

7501 University
Clive, IA 50325
Ph. 277-6483

3122 Merle Hay Road
Des Moines, IA 50310
Ph. 270-8477



**Craftsmanship at its
finest**

- Custom Built Weed Fence, Western Red Cedar & Treated Wood
- Heavy Vinyl & Aluminized Chain Link
- Residential & Commercial
- Warranties from 5-25 Years
- Authorized Merchant Metal Dealer
- Financing Available

FREE ESTIMATES 270-6227

REFERENCES AVAILABLE

73 YEARS IN THE BUSINESS

GOOD YEAR

JOHNSTON TIRE

**SERVICES FOR YOUR
CAR OR LIGHT TRUCK**

- | | |
|---|--|
| <input type="checkbox"/> Computerized wheel alignment | <input type="checkbox"/> Goodyear batteries |
| <input type="checkbox"/> Computerized engine analysis | <input type="checkbox"/> Complete cooling & radiator systems |
| <input type="checkbox"/> Complete engine tune-up | <input type="checkbox"/> Windshield wiper service |
| <input type="checkbox"/> Belt & hose changeover | <input type="checkbox"/> Fuel injection service |
| <input type="checkbox"/> Transmission maintenance | <input type="checkbox"/> Total tire repair, replacement, computer balancing & rotation |
| <input type="checkbox"/> Shocks, struts & springs | |
| <input type="checkbox"/> Complete exhaust system | |
| <input type="checkbox"/> Disc & drum brake systems | |

5730 Merle Hay Rd.

276-8665

Johnston River Trail

The Johnston, Iowa River Trail is the result of many years of planning, development and cooperation between Johnston, Des Moines, the Iowa Department of Natural Resources and the U.S. Army Corps of Engineers.



A variety of wildlife can be seen throughout your journey which begins north of Johnston at the Big Creek Beach, and travels nearly 24 miles to the Birdland Marina Staging Area in Des Moines. Along the way, vacationers can witness a variety of wildlife including deer, squirrels, woodducks, song birds and grasses and wildflowers native to the Central Iowa terrain. See the River Trail Mileage Chart on the following page.

The year-round trail is open to hikers, bikers, runners, roller skaters and cross-country skiers. The trails area is easily handicap accessible and offers a variety of nature stops along the way for the entire family. The River Trail hosts seven drinking water and restroom facilities.

For more information, contact the Iowa Department of Natural Resources, Wallace State Office Building in Des Moines at 515-281-5145.

Johnston River Trail Mileage Chart

A variety of wildlife can be seen throughout your journey which begins north of Johnston at the Big Creek Beach, and travels nearly 24 miles to the Birdland Marina Staging Area in Des Moines. Below is a listing of each staging area along the River Trail and the number of miles from one area to the next.

Big Creek Beach	2.9 Miles	To
Big Creek Staging Area	1.4 Miles	To
N.W. Jester Park Drive	2.7 Miles	To
Sandpiper Rec. Area	1.1 Miles	To
Prairie Flower Rec. Area	1.7 Miles	To
N.W. 90th Place Staging Area	1.1 Miles	To
Saylorville Visitor Center	2.5 Miles	To
Cottonwood Rec. Area	1.1 Miles	To
Sycamore Access	1.4 Miles	To
Euclid Ave. Staging Area	4.8 Miles	To
McHenry Park Turnoff	1.5 Miles	To
Birdland Marina Staging Area	1.5 Miles	To
TOTAL	23.7 Miles	

**The only one along
the gateway to
Saylorville....**

- Full Line of Live Bait
- Complete Line of Tackle
- Licenses
- Up-to-date Fishing Information
- Snacks • Beverages • Ice

**BEAVER CREEK
BAIT & TACKLE**

6148 Merle Hay Rd.
270-8441



HEART INTERNATIONAL ADOPTION SERVICES

- Placing children three months + in:
Bolivia • Eastern Europe • China • Armenia
- Accepting applications from parents up to age 55
- Working with families in all 50 states
- Travel within one year
- Licensed non-profit

713/326-3063

2851 Marina Bay Drive #130
League City, Texas 77586

515/278-4053

5335 Merle Hay Road
Johnston, Iowa 50131



Growing to Serve You Better

**Village Square
Shopping Center**

Just 2 Miles North
of Merle Hay Mall 270-3525
5800 Merle Hay Rd.

Owned by Denny Elwell Companies,
Ankeny, Iowa 50021

**Thanks for
making us**

#1

92.7 percent of our
readers say we are
their primary source
for local news about
Johnston

The Johnston Advance

Welcome To Lake Country

Experience the quality of the Corps of Engineers campgrounds at Saylorville Lake. Four separate camping areas are located in scenic areas around the lake. Each campground has modern restrooms, showers, electrical hook-ups, trailer dump stations, and playgrounds.

Campsites are available on a first come first serve basis unless otherwise listed below as reservable.

The Corps of Engineers at Saylorville Lake provides 24 picnic shelters to enhance the recreational experience of lake visitors. All shelters have picnic tables, electrical outlets, fireplaces, and cooking grills. Running water, playgrounds and restrooms are located nearby. Individual shelters can accommodate groups from 50 to 500 depending on available parking and area facilities.

Telephone Directory (Area Code 515)

U.S. Army Corps of Engineers Administration Office	276-4656
Saylorville Lake Visitor Center	964-0672
Lake Information (Recording)	276-0433
Shelter Reservations	270-6173
Campgrounds	
Acorn Valley (May-Sept)	276-0429
Bob Shetler (May-Sept) (Reservable)	276-0873
Cherry Glen (Apr-Oct)	964-8792
Prairie Flower (May-Sept) (Reservable)	984-6925
Saylorville Marina	984-6541
Big Creek Boat Rental	984-6083
Birdland Marine	265-0980
Big Creek Shooting Range	795-3577
Jester Park Riding Stables	999-2818
Jester Park Golf Course	999-2903



INTERNATIONAL TOURS & CRUISES

Your Full Service Travel Agency For Domestic & Foreign Travel

CORPORATE TRAVEL

- Free \$100,000 Travel Insurance •
- 24 Hour Toll Free Services •
- Incentive Travel •

INTERNATIONAL TRAVEL

- Expert Foreign Travel Planners •
- Passport & Visa Assistance •
- Arrangements for Business or Leisure Travel •

CRUISES

- One of Only 5 Iowa Accredited Cruise Counsellors •
- Discounts for Early Booking •
- A Small deposit Will Hold Your Cabin •

EXECUTIVE TRAVEL

- Exclusive Upscale Travel Services •
- Every Detail Personally Arranged •
- For Those Who Want the Best •

- Ask About Our Extensive Video Library •

7662 Hickman Road • Sherwood Forest

276-8687

LYLE KREPS - MANAGER

131 N Ankeny Blvd • Ankeny, Iowa

964-9886

FREE TICKET DELIVERY TO HOME OR OFFICE



NorthGlenn offers exciting possibilities for young families and those who wish to buy their dream home.

NORTHGLENN

Part of a quickly growing community,

NorthGlenn is ideally located for

both comfort and convenience.

With immediate access to

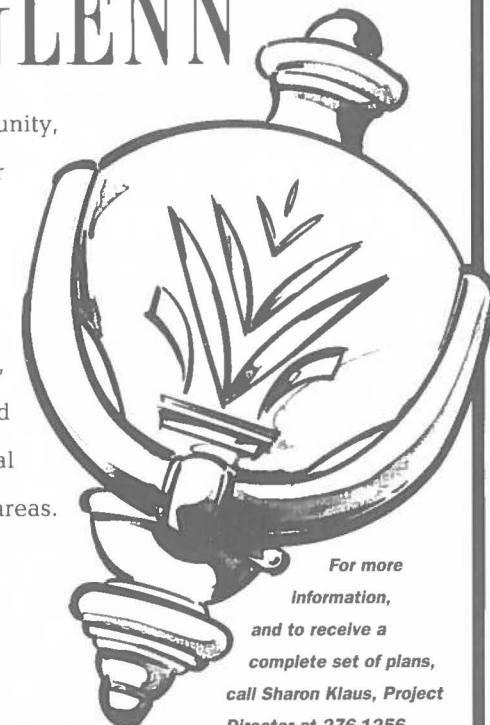
Merle Hay Road in Johnston,

NorthGlenn is close to shopping,

entertainment, and business, and

it is also within minutes of central

Iowa's finest natural recreation areas.



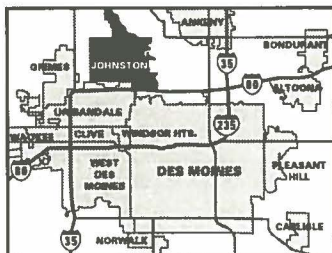
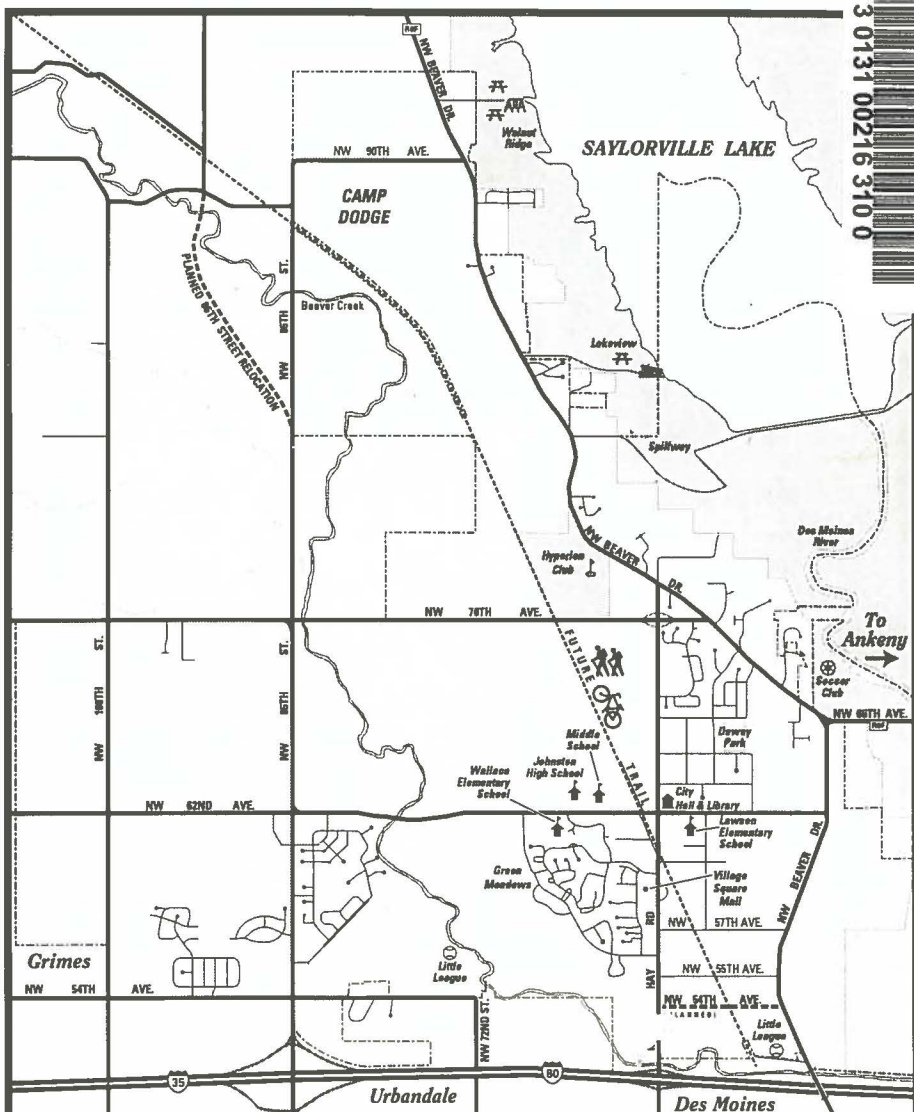
For more information, and to receive a complete set of plans, call Sharon Klaus, Project Director at 276-1256.



NorthGlenn's greenbelt area with a bike path offers families opportunities to enjoy the outdoors close to home.

**SITE OF
HomeShowExpo '95**

3 0131 00216 310 0



CITY OF Johnston

MAP COURTESY OF MAPWORKS, INC.
FOR CUSTOM MAPS MADE FROM
OUR GROWING LIBRARY OF COMPUTER-
GENERATED MAPS, CONTACT US.



SCOTT T. PARKS
PRESIDENT
MAPWORKS, INC.

CALL FOR DETAILS
515-255-2148
IN DES MOINES

LEGEND

- Schools
- Municipal Bldgs
- Playground
- Picnic Area
- Boat Ramp
- U.S. Interstates
- Iowa Highways
- County Roads
- Major Streets
- Residential
- Creeks
- Regional Trail
- Proposed Roads



SCALE IN MILES
0 0.1 0.2 0.3 0.4 0.5 0.6 0.7 0.8 0.9 1.0
SCALE IN KILOMETERS
0 0.1 0.2 0.3 0.4 0.5 0.6 0.7 0.8 0.9 1.0



©1995 Mapworks, Inc. All Rights Reserved.